

CBC5010
5 X 10 CLOSED BAGGAGE CART
Model Year: 2009



***** Important *****
Read User's Manual Completely Prior to Operating, Towing, or Servicing Cart



Par-Kan Company
2915 West 900 South
Silver Lake, IN 46982

Phone: 1-800-291-5487
Phone: 260-352-2141
Fax: 260-352-0701

Contact: GSE Sales Department
Email: gsesales@par-kan.com
Website: www.par-kan.com



CBC5010

CUSTOMER: _____

SERIAL # _____

MANUFACTURING DATE: _____



CBC5010 Manual Table of Contents

Page 1	Cover Page
Page 2	Unit Information
Page 3	Table of Contents
Page 4	Manual Introduction
Page 5	Warranty Information
Page 6	General Information
Page 7	General Operating Instructions
Page 8	Safety Precautions
Page 9	Specifications and Capabilities
Page 10-11	Maintenance and Overhaul
Page 12	Troubleshooting
Page 13	Intro to Illustrated Parts Listing
Page 14	Final Assembly Replacement Parts
Page 15-16	Curtain Assembly
Page 17	Center Shelf Assembly
Page 18	E Hitch Assembly
Page 19-20	Lower 5th Wheel Standard Axle Assembly (Bearing Style)
Page 21-22	Lower 5th Wheel Torsion Axle Assembly (Bearing Style)
Page 23	Torsion Stub Axle Assembly
Page 24	Curtain Lock Styles
Page 25	Brake Bar Styles
Page 26	Brake Bar Adjustment
Page 27	Rear Torsion Axle Box Assembly
Page 28	Rear Standard Axle Box Assembly

Note: This manual supersedes any other information supplied by Par-Kan Company before this date, and is good only for serial numbers listed in the manual.



CBC5010 Manual Introduction

This manual incorporates information for Par-Kan Company's (Ground Support Equipment Division) Closed Baggage Cart, Model CBC5010 and includes general information, operation, maintenance, overhaul and illustrated parts lists. This manual replaces all Par-Kan Company's Closed Baggage Carts manuals previously issued in their entirety.

This manual is a compilation of the best information available at the time of writing. If errors or misinformation are found, change requests should be submitted in writing to the manufacturer.

If you have any questions about this product or would like further information about Par-Kan Company's ground support equipment please contact the manufacturer.

Manufacturer is: Par-Kan Company
 Ground Support Equipment Division
 P.O. Box 219
 2915 West 900 South
 Silver Lake, IN 46982
 800-291-5487 Phone
 (260) 352-2141 Phone
 (260) 352-0701 Fax



Par-Kan Company—Ground Support Equipment
CBC5010 Warranty

Par-Kan Company's Ground Support Equipment is warranted to the original purchaser to be free from defects in material and workmanship for a period of one year from the date of purchase as dated on Par-Kan's original invoice.

Par-Kan will replace during the warranty period, subject to an examination by an authorized representative of Par-Kan, any warranted part which proves defective in material and/or workmanship under normal installation, use, and service. Parts must be returned, and transportation charges prepaid to our factory. Any changes to Par-Kan equipment as a result of modifications, misuse, abuse, neglect, accident, vandalism, fire, flood, other acts of God, or improper installation will void this warranty.

If Par-Kan receives notice of such defects during the warranty period, Par-Kan will either, at its option, repair or replace products which prove to be defective. Other manufacturer's warranties may apply for parts purchased by Par-Kan. Par-Kan Company makes no other warranty, either expressed or implied, with respect to this product. Any special, incidental, or consequential damages arising from any breach of warranty are specifically excluded hereunder.



CBC5010 General Information

Steering:	Double Plated Poly Disk with Ball Bearings
Wheels:	5 Bolt hub assembly with bearings (2,905 lb. load capacity each) Tires: 5.70 X 8.00 Pneumatic Rims: White
Parking Brakes:	Tow bar activated friction brake
Tow Bar:	2 1/2" I.D. tow bar lunette ring 5 Ton capacity
Finish:	Enamel Finish
Reflectors:	3" Diameter (Amber / Red) D.O.T. approved Location: Front, Rear, and Sides
Cart Design:	Bed: 12ga steel End Panels: 14ga steel Roof: 14ga steel
Hitch:	E - Hitch
Options:	Fixed or Torsion Axles V-bed Bolt On V-Shelf Corner Bumpers Handles Special Curtains Cone Hitch Curtain Locks Tires



CBC5010 General Operating Instructions

1. Check to ensure that all cargo is secured and that the curtains are securely fastened prior to moving the unit.
2. Release the parking brake by pushing the tow bar back towards the unit and lifting up the brake latch with your foot, the brake will then release as the tow bar is lowered into a horizontal position. Do not drop the tow bar.
3. Lay tow bar in a horizontal position and pin the tow bar to the towing vehicle. The tongue should be securely attached to the vehicle using all safety devices to ensure that the unit does not disconnect from the tow vehicle.
4. Tow the unit to the desired location, (**CAUTION: DO NOT EXCEED 15MPH**), turn the tow vehicle engine off and set the parking brake.
5. Tow the unit to the designated parking area and disconnect the tow bar from the tow vehicle.
6. To activate the parking brake push the tow bar towards the unit until the brake latches. When the tow bar is in the vertical position the parking brake is set.



CBC5010 Safety Precautions

TOWING:

The CBC5010 cart is designed for aircraft ramp use only; it is not intended for highway or off-road use. Towing speed should not exceed 15mph. When traveling over rough surfaces or making sharp turns, speeds should be reduced to ensure safety.

PARKING:

When the unit is parked the tow bar should be latched in the upright, vertical, position to engage the parking brake. If unit is not connected to the tow vehicle the parking brake must be set to prevent the unit from rolling.

OPERATING:

When moving the unit by hand use caution, especially in wet conditions. The brakes on the CBC5010 depend on friction between the brake bar and tire. Do not leave the cart unattended without it being connected to a tow vehicle, or ensuring that the parking brake is properly set. Do not exceed the carts capacity, which is listed on page 9 under specifications and capabilities.

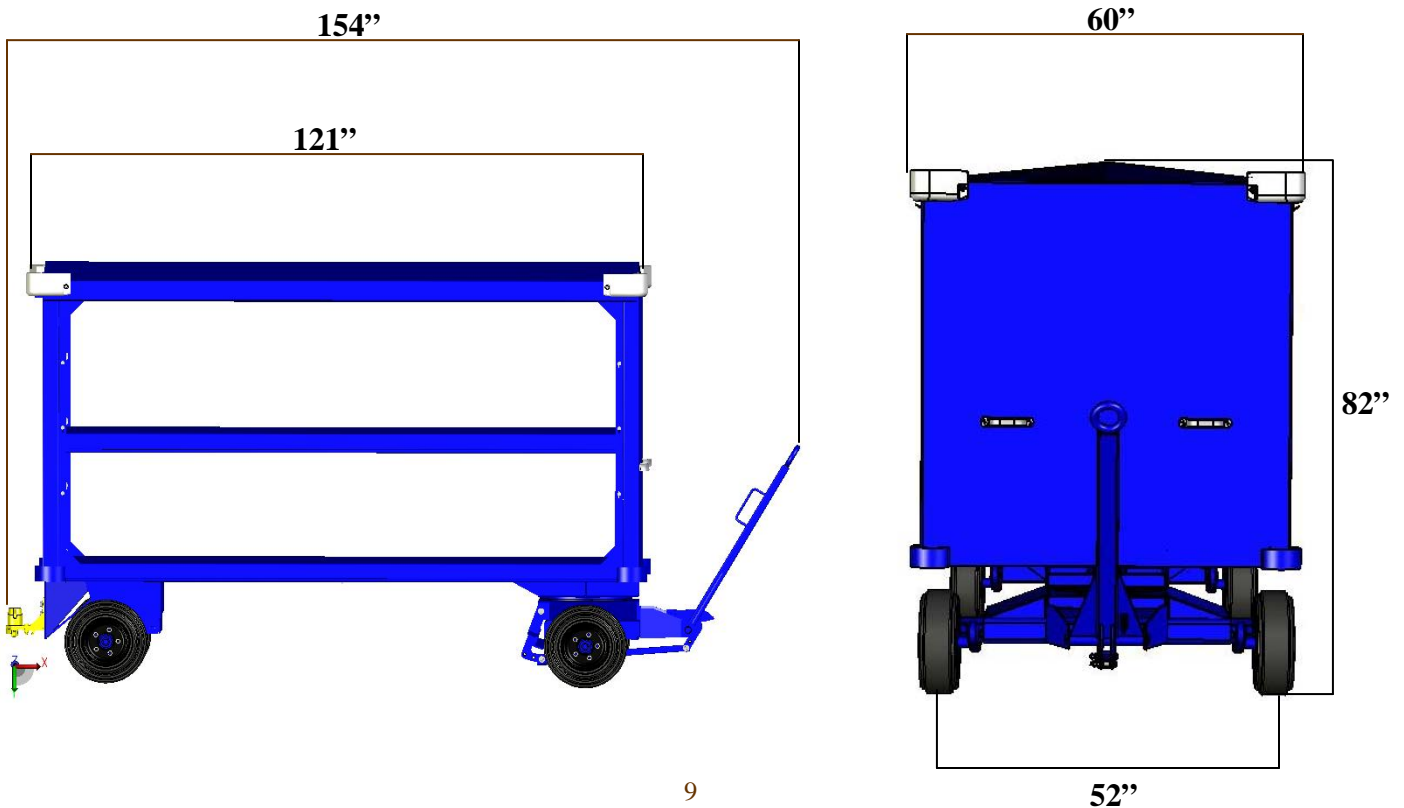


CBC5010 Specifications & Capabilities

Dimensions: Length : 154”
 Width: 60”
 Height: 82”

Load Capacity: 4,000 lbs. with Standard Axle and Pneumatic Tires
 5,000 lbs. with Torsion Axle and Solid Tires

Speed Limit: Towing speed should not exceed 15 mph.





CBC5010 Maintenance / Overhaul

Servicing:

Proper maintenance is an essential part of a long life for the CBC5010. As with any equipment the cart needs inspections, lubrications and adjustments to keep it in good condition while providing maximum protection for the equipment.

WARNING:

Before removing or installing any components, be sure the cart is on level ground with the wheels securely blocked.

Wheels and Tires:

Check the tire pressure weekly if pneumatic tires have been installed. The proper pressure is labeled on the tire. Check and adjust the wheel bearings during the first few days of operation.

To tighten wheel bearings:

1. Remove dust cap
2. Remove cotter pin from the castle nut and tighten the nut until there is a slight drag on the bearing while turning the wheel.
3. Loosen the nut one slot and reinsert the cotter pin.
4. Following this adjustment there should be a slight amount of drag on the bearing.
5. Replace the dust cap.

Wheel Bearing Lubrication:

Pack the wheel bearings every 6 months or as needed with S.A.E. multi-purpose grease.



CBC5010 Maintenance / Overhaul

Brake Adjustment:

Periodic adjustment of the brake is needed to assure proper operation.

1. Raise the tongue so that the tongue latch touches the tongue.
2. With the tongue in this position, check the brake bar, the brake bar should just touch the tires.
3. If the brake bar is not properly adjusted, adjust the brake linkage bar so that the brake bar touches the tire. To adjust the brake linkage bar, loosen the locknuts and adjust the threaded rod accordingly, then retighten the lock nuts against the brake yoke.

FIFTH WHEEL STEERING

Check the steering assembly daily; ensure that the tow bar pin assembly and cotter pin are securely fastened to the lower fifth wheel box and towbar. **WARNING: FAILURE TO ENSURE THAT PIN IS SECURED COULD LEAD TO LOSS OF STEERING AND CONTROL OF THE UNIT.**

After the first 30 days of service, the 5th wheel nut will need to be checked for the correct amount of torque (40 Ft.-lbs.). Then recheck every six months in order to ensure proper safety.

Storage:

When storing the unit for extended period of time, the following procedures are suggested:

1. Touch up all worn or damaged paint.
2. Lift and block the unit with tires lifted off the ground.



CBC5010 Troubleshooting

If the brakes do not engage or disengage?

Check the brake yoke bar adjustment

If the steering on the unit will not turn?

Check to ensure the brake is not engaged

If the unit pulls to one side?

Check the tire pressure and bearings

If the tow bar will not stay in the locked position

Check the tow bar latch and latch bar for excessive wear

Check the break yoke bar for any adjustment



CBC5010 Introduction to Illustrated Parts Listing

The illustrated parts list contains a breakdown of the CBC5010. All parts contained in the CBC5010 baggage cart that can be disassembled, repaired, manufactured, replaced or reassembled are listed.

Each sketched assembly is followed immediately by its detailed parts list.

Item Number Column: The figure and index numbers key the detailed parts list to the applicable illustration.

Part Number Column: This column contains the manufacturer's part numbers.

All parts listed on the following pages are available through Par-Kan Company.



CBC5010 FINAL ASSEMBLY REPLACEMENT PARTS

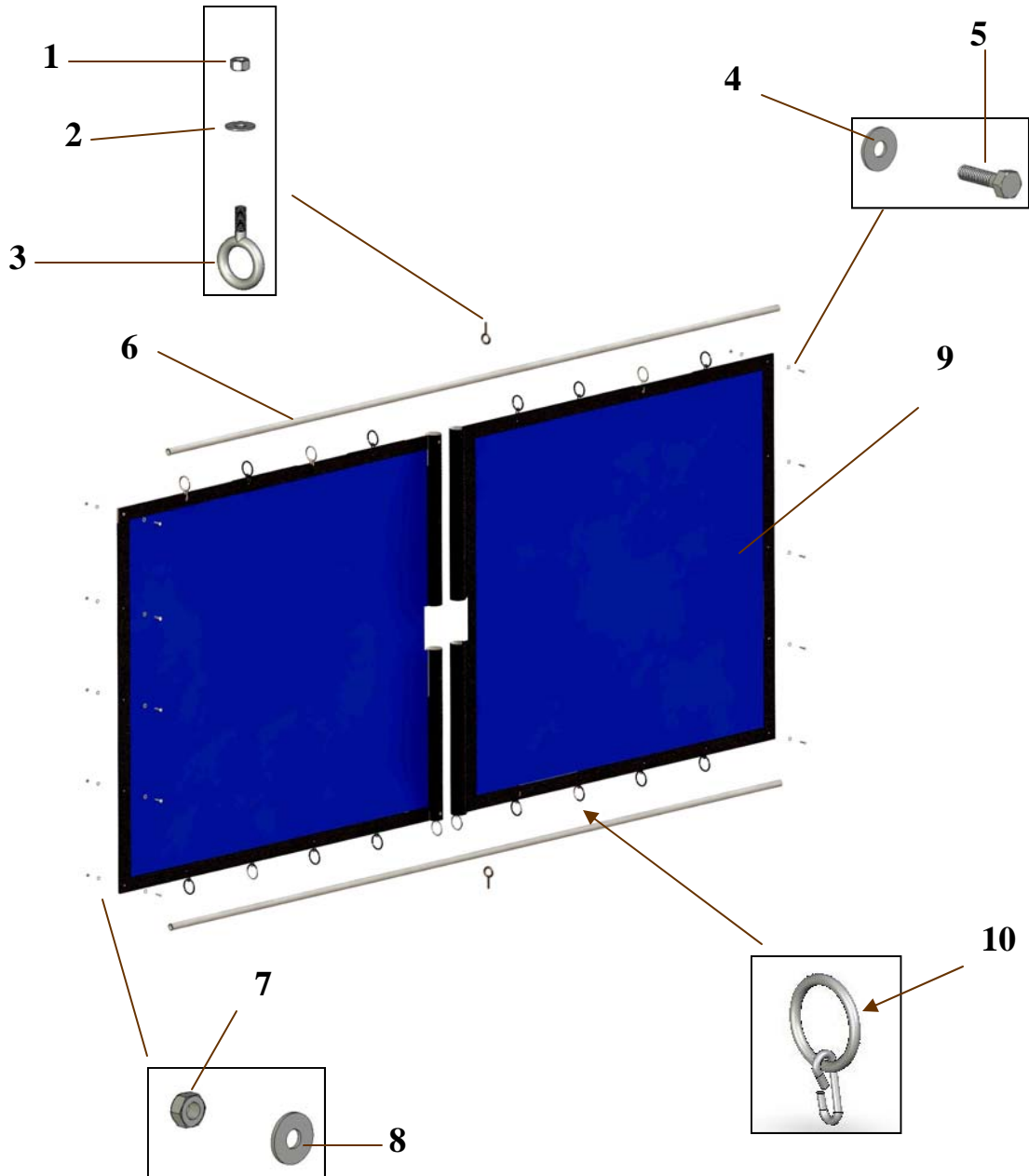


Item No.	Part Number	Description
1	201101	BUMPER, CORNER- Black
	201102	BUMPER, CORNER -White
2	270010	Chrome Handle
3	241050	TIRE/RIM ASSY, 4.00X8.00 CUS EL ITL WHITE
	241056	TIRE/RIM ASSY, 5.70X8.00 WHITE RIM
	241057	TIRE/RIM ASSY, 5.70X8.00 BLACK RIM
	241062	TIRE/RIM ASSY, ST 145/R12 LRD RADIAL
***	219023	BOLT BAG, LUG NUT BAG - GSE (20 LUG NUTS)

*** Not Shown in Schematic



CBC5010 CURTAIN ASSEMBLY





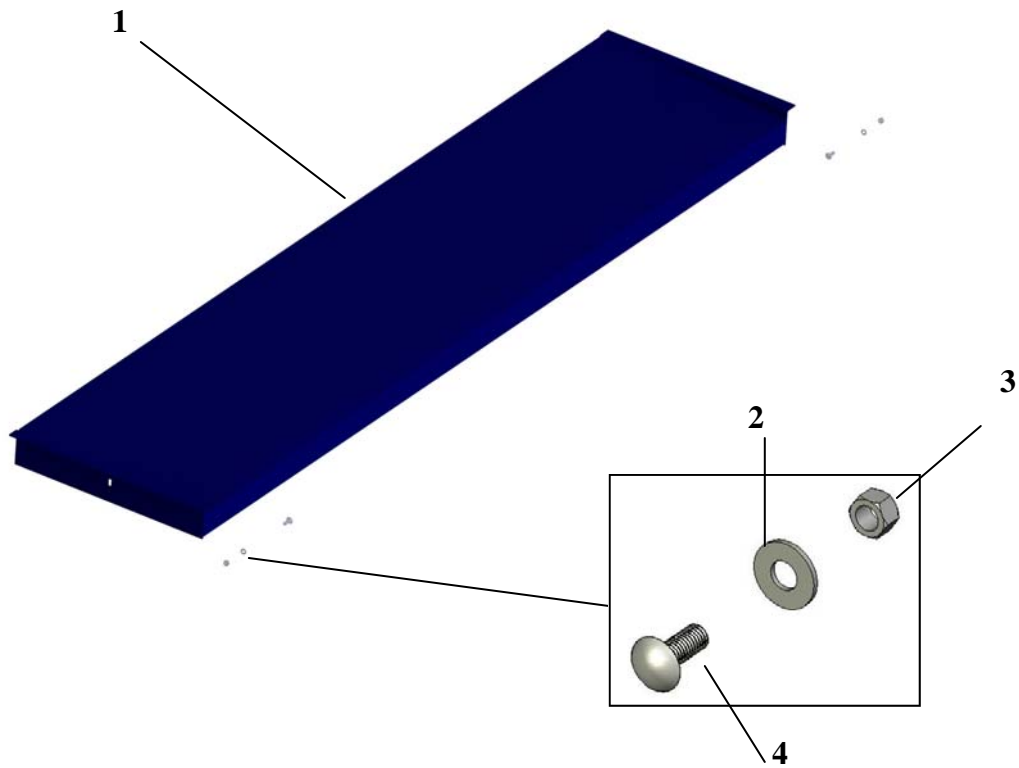
CBC5010 CURTAIN ASSEMBLY PARTS LISTS

Item No.	Part Number	Description
1	216507	LOCKNUT, 3/8"-16 HEX 2-WAY - ZINC
2	217003	WASHER, 3/8" USS FLAT ZINC
3	210342	EYEBOLT, BOTTOM CURTAIN PIPE X 1" SHANK
4	217001	WASHER, 1/4" USS FLAT ZINC (SEE BOLT BAG)
5	211004	HHCS, 1/4"-20 X 1" GR5 ZINC (SEE BOLT BAG)
6	CBC510-9P050	CURTAIN ROD
7	216503	LOCKNUT, 1/4"-20 HEX 2-WAY - ZINC (SEE BOLT BAG)
8	217001	WASHER, 1/4" USS FLAT ZINC (SEE BOLT BAG)
9	351100	Curtain, CBC 4000 (Med. Blue) 18 oz.
10	351099	STEEL RING & S-HOOK ASSY. @90 DEG OFFSET
***	CBC510-9P000	CURTAIN PIPE (PVC SLEEVE)
***	219026	BOLT BAG, CURTAIN HARDWARE FOR 1 PAIR

*** Not Shown in Schematic



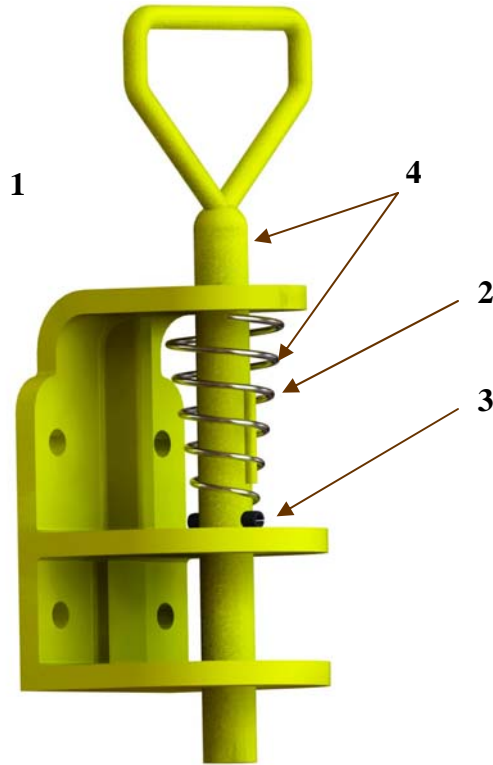
CBC5010 CENTER SHELF ASSEMBLY



Item No.	Part Number	Description
1	CBC510-9W020	CENTER SHELF WELDMENT
2	217359	WASHER, 3/8" SPLIT LOCK ZINC
3	216507	LOCKNUT, 3/8"-16 HEX 2-WAY - ZINC
4	215054	CARRIAGE, 3/8"-16 X 1" GR5 ZINC



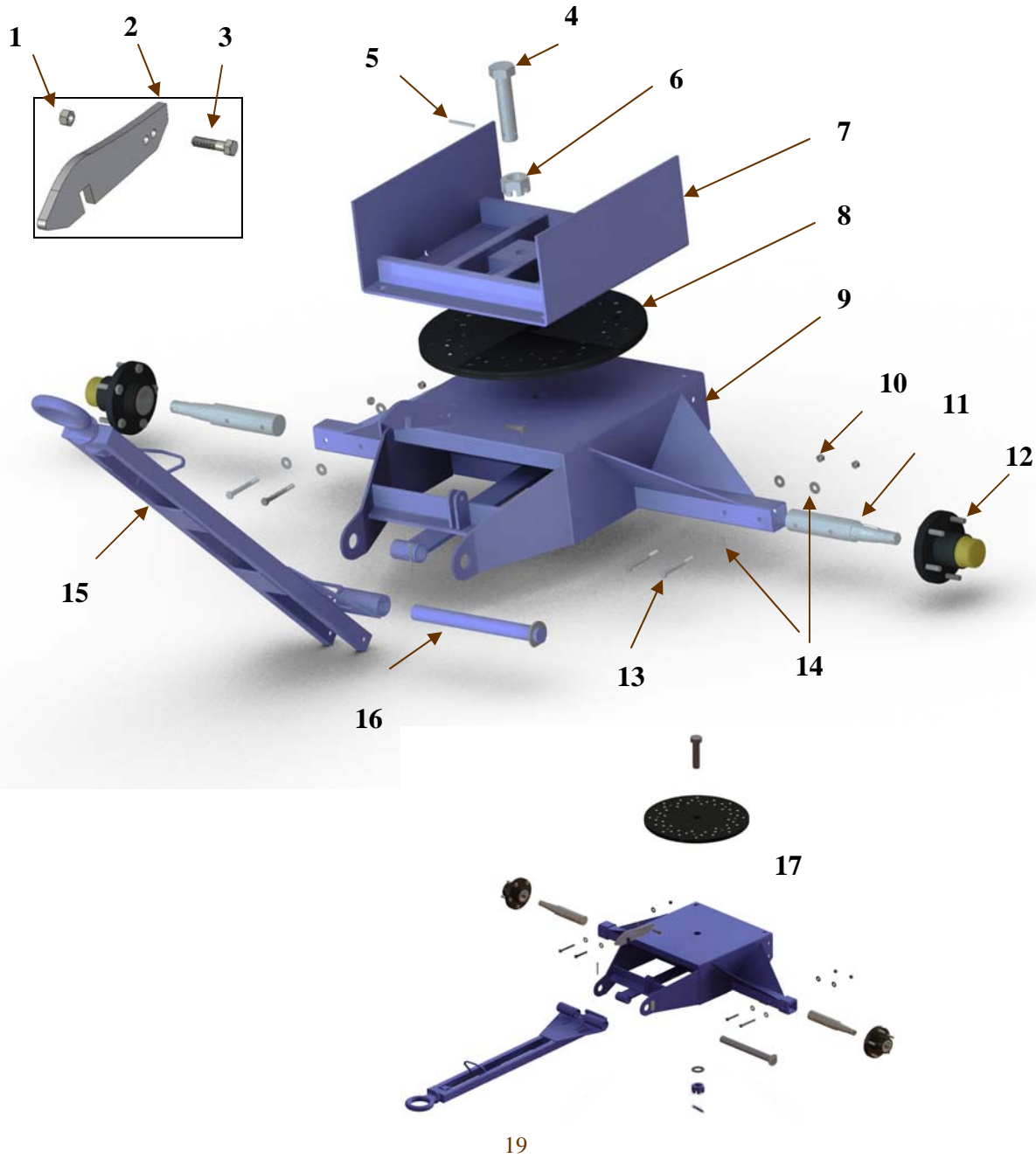
CBC5010 E-HITCH ASSEMBLY



tem No.	Part Number	Description
1	270508	COMPLETE E HITCH ASSEMBLY
2	270509	E HITCH SPRING
3	210118	E HITCH ROLL PIN
4	270523	E HITCH SPRING / HANDLE REPAIR KIT



CBC5010 LOWER 5TH WHEEL STANDARD AXLE ASSEMBLY
(BEARING)



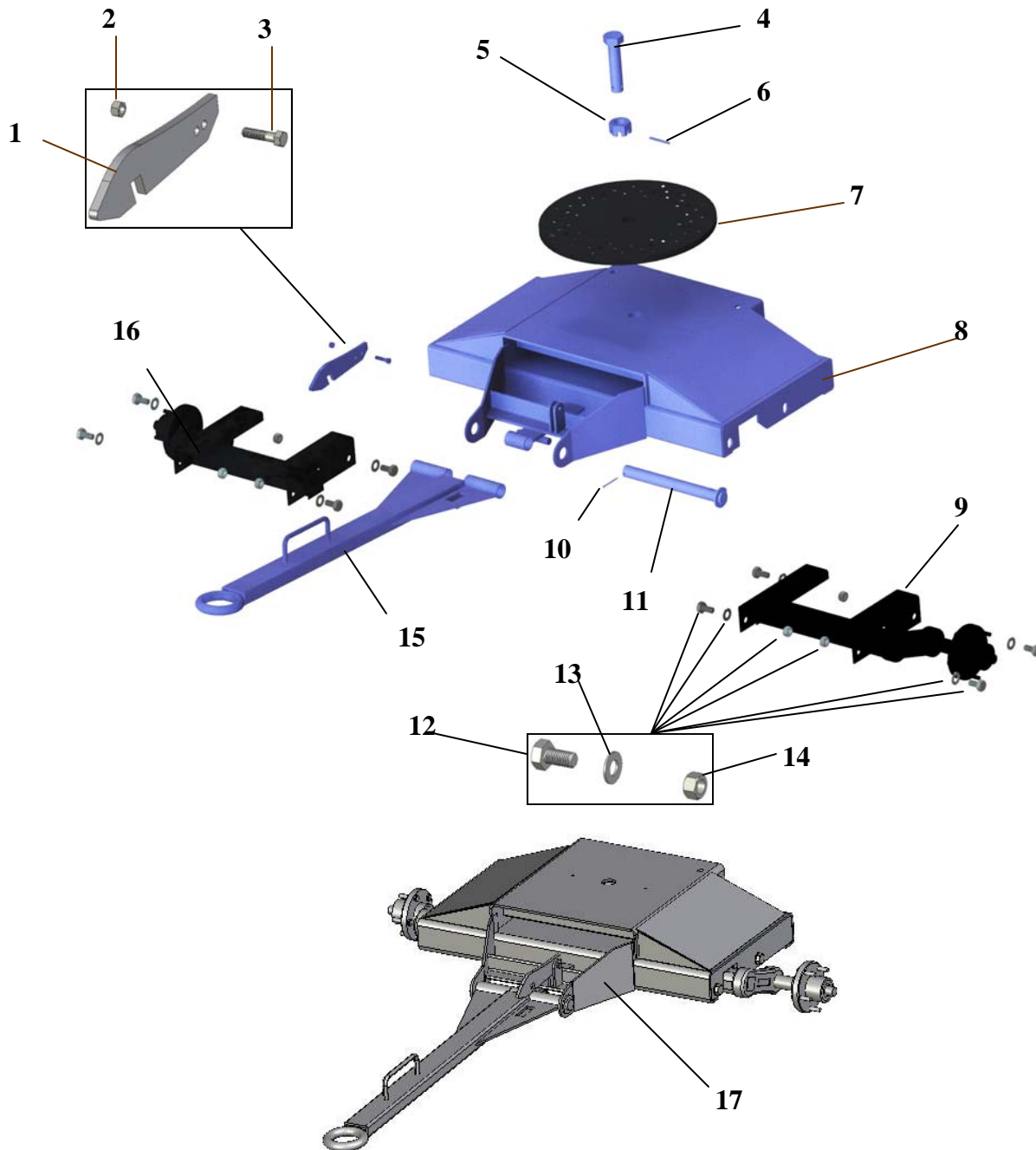


CBC5010 LOWER 5TH WHEEL STANDARD AXLE ASSEMBLY
(BEARING)

Item No.	Part Number	Description
1	216507	LOCKNUT, 3/8"-16 HEX 2-WAY - ZINC
2	CBC510-2P500	LATCH, TOW BAR
3	211061	HHCS, 3/8"-16 X 1-1/2" GR5 ZINC
4	CBC510-2P600	5TH WHEEL BOLT
5	210104	ROLL PIN, 3/8" X 2-1/2" (SPRING PIN)
6	216220	NUT, 1-1/4"-12 SLOTTED HEX - PLAIN
7	CBC510-2W035	UPPER 5TH WHEEL WELDMENT
8	241197	TURNTABLE, LAMINATED W/3/4" CHROME BALLS
9	CBC510-2W015	LOWER 5TH WHEEL WDMT, FAFP
10	216507	LOCKNUT, 3/8"-16 HEX 2-WAY ZINC
11	241000	SPINDLE, "STANDARD" GSE
12	241025	HUB ASSY., 5 BOLT 4 1/2" "STANDARD" GSE
13	211069	HHCS,3/8"-16 X 3 1/2" GR5 ZINC
14	217003	WASHER, 3/8" USS FLAT ZINC
15	270510	TOWBAR
16	CBC510-2W014	TOW BAR PIN WELDMENT
17	CBC510-2S016	FIXED AXLE, LOWER 5TH WHEEL ASSEMBLY



CBC5010 LOWER 5TH WHEEL TORSION AXLE ASSEMBLY
(BEARING)



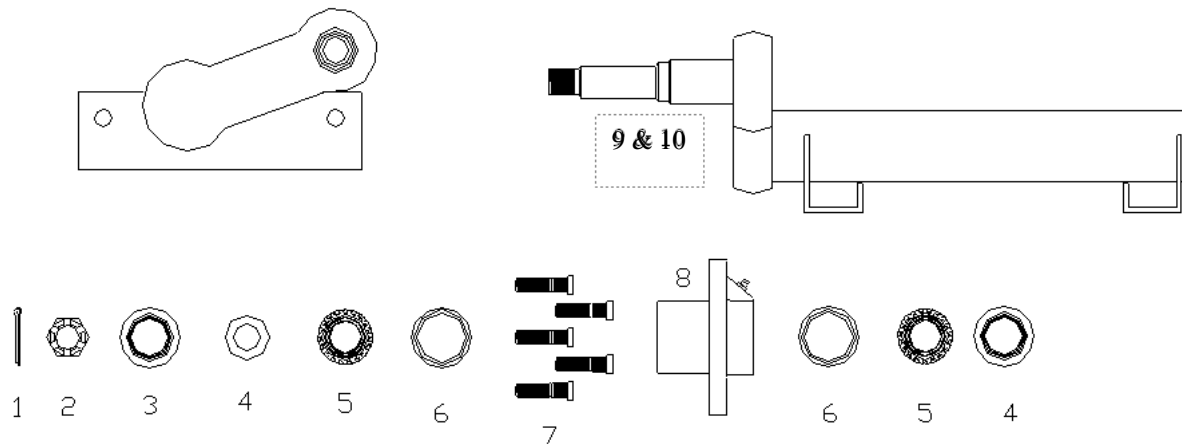


CBC5010 LOWER 5TH WHEEL TORSION AXLE ASSEMBLY
(BEARING) PARTS LISTING

Item No.	Part Number	Description
1	CBC510-2P500	LATCH, TOW BAR
2	216507	LOCKNUT, 3/8"-16 HEX 2-WAY - ZINC
3	211061	HHCS, 3/8"-16 X 1-1/2" GR5 ZINC
4	CBC510-2P600	5TH WHEEL BOLT
5	216220	NUT, 1-1/4"-12 SLOTTED HEX - PLAIN
6	210104	ROLL PIN, 3/8" X 2-1/2" (SPRING PIN)
7	241197	TURNTABLE, LAMINATED W/3/4" CHROME BALLS
8	CBC510-2W012	LOWER 5TH WHEEL WELDMENT (BEARING)
9	241021	TORSION STUB AXLE ASSY (LH)
10	210155	COTTER PIN, 3/16" X 2" - ZINC
11	CBC510-2W041	TOW BAR PIN WELDMENT
12	211159	HHCS, 5/8"-11 X 1-1/4" GR5 ZINC
13	217007	WASHER, 5/8" USS FLAT ZINC
14	216515	LOCKNUT, 5/8"-11 HEX 2-WAY - ZINC
15	270510	TOW BAR WELDMENT
16	241022	TORSION STUB AXLE ASSY (RH)
17	CBC510-2S011	LOWER 5TH WHEEL ASSEMBLY (BEARING)
18	CBC510-2S014	LWR 5TH WHEEL ASSEMBLY (W/AXLES, NO TOWBAR)



CBC5010 TORSION STUB AXLE PARTS LIST



Item No.	Part Number	Description
1	241108	COTTER PIN, SPINDLE /GSE
2	241117	NUT, SPINDLE "TORSION AXLE" GSE
3	241116	SEAL, "TORSION" HUB / GSE
4	241120	WASHER, SPINDLE "TORSION" GSE
5	241119	BEARING, INNER/OUTER "TORSION" GSE
6	241118	CUPS, "TORSION" 2,000# IDLER GSE
7	241103	LUG BOLT, PRESS-IN (GSE)
8	241027	HUB ASSY., "TORSION" 5 BOLT 4-1/2" GSE (# 1-8)
9	241021	COMPLETE LH TORSION AXLE
10	2241022	COMPLETE RH TORSION AXLE



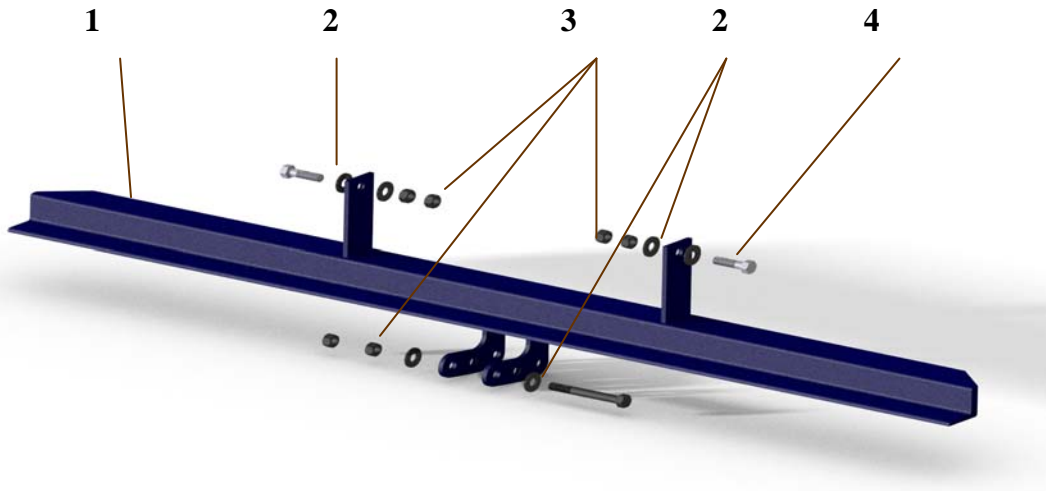
CBC5010 CURTAIN LOCK STYLES



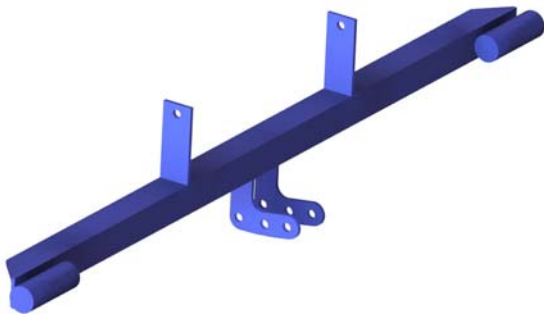
CBC510-9W005	RIGHT SIDE
CBC510-9W006	LEFT SIDE



CBC5010 BRAKE BAR STYLES



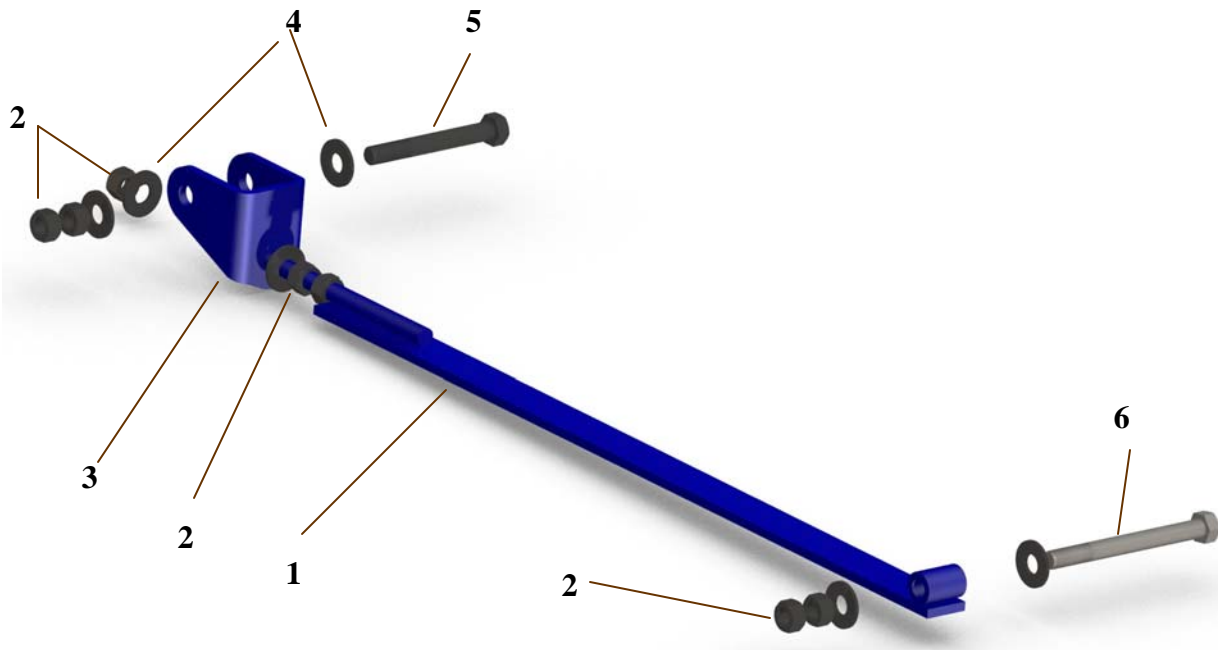
Item No.	Part Number	Description
1	CBC510-1W000	BRAKE BAR WELDMENT
2	217005	WASHER, 1/2" USS FLAT ZINC
3	216511	LOCKNUT, 1/2"-13 HEX 2-WAY - ZINC
4	211115	HHCS, 1/2"-13 X 1-3/4" GR5 ZINC



CBC510-1W002	Brake Bar Weldment
--------------	--------------------



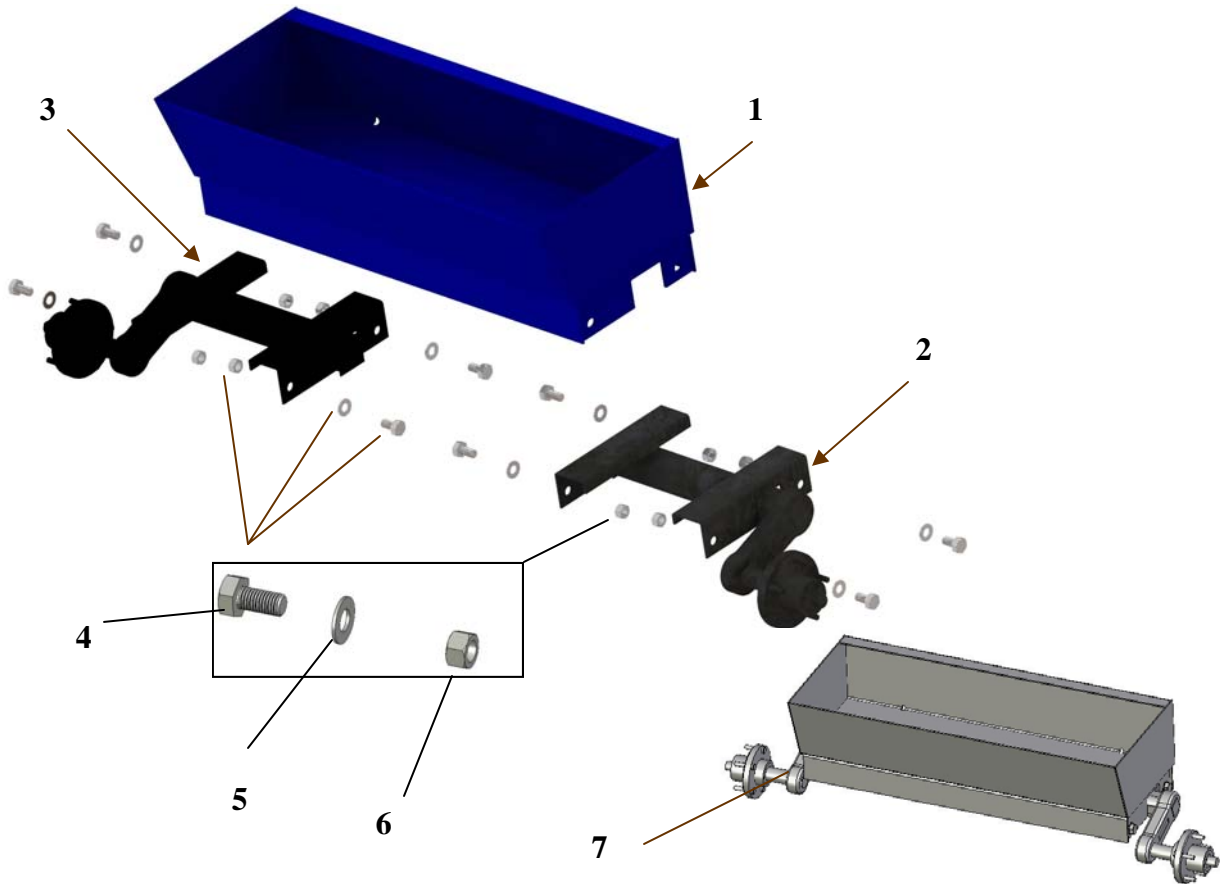
CBC5010 BRAKE BAR ADJUSTMENT



Item No.	Part Number	Description
1	L250LP-1W001	BRAKE BAR ASSEMBLY
2	216511	LOCKNUT, 1/2"-13 HEX 2-WAY - ZINC
3	CBC480-1P200	BRAKE BAR YOKE
4	217005	Washer, 1/2" USS FLAT ZINC
5	211124	Bolt, 1/2" - 13 X 4"
6	211127	Bolt, 1/2" - 13 X 5"



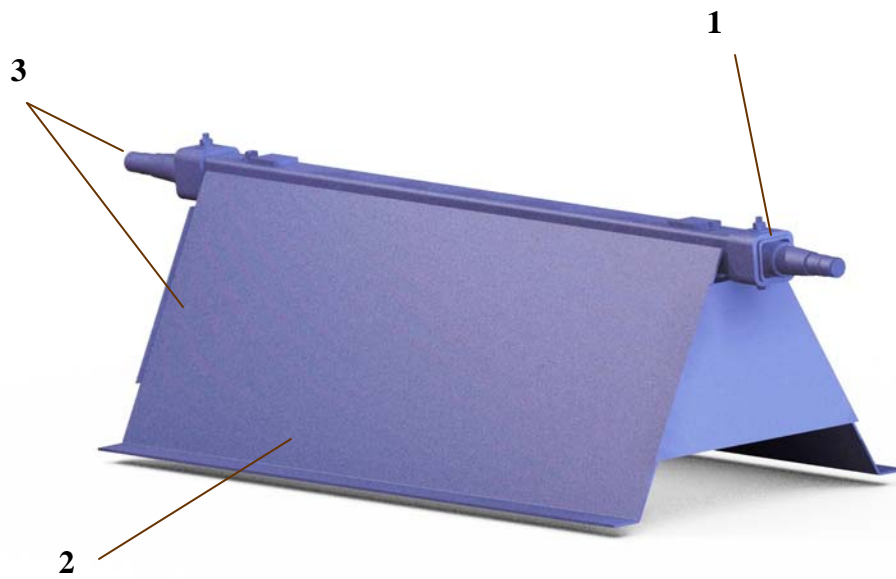
CBC5010 REAR TORSION AXLE BOX ASSEMBLY



Item No.	Part Number	Description
1	CBC510-3W020	REAR AXLE BOX WELDMENT
2	241022	TORSION STUB AXLE ASSY (RH)
3	241021	TORSION STUB AXLE ASSY (LH)
4	211159	HHCS, 5/8"-11 X 1-1/4" GR5 ZINC
5	217007	WASHER, 5/8" USS FLAT ZINC
6	216515	LOCKNUT, 5/8"-11 HEX 2-WAY - ZINC
7	CBC510-3A010	REAR AXLE BOX ASSEMBLY



CBC5010 REAR STANDARD AXLE BOX ASSEMBLY



Item No.	Part Number	Description
1	CBC510-3A000	5X10 FIXED REAR AXLE ASSEMBLY
2	CBC510-3W001	5X10 REAR AXLE BOX WELDMENT